

Jef Hall-Flavin

director

+1 612 385 7965
+44 738 467 6617
jef.hall.flavin@gmail.com

50 Pleasant St Unit 2 | Provincetown MA | 02657 | usa
103 Beckford Building | Heritage Lane | London | NW6 2AQ | uk

jefhallflavin.com



theatre | staff positions

Provincetown Tennessee Williams Theater Festival – Provincetown, MA

Creative Consultant 2018 - present

Executive Director 2008-18

Producing Director 2006-07

- Produce and direct classic and world premiere Tennessee Williams plays, new plays, and other disciplines such as dance, music and education programs
- Supervise production management, festival operations, development, marketing, and key staff
- Community relations with local sponsors, venues, donors
- Grant applications and compliance for public and private funding sources
- Ticketing and house management for 40+ events in 4 days
- Supervise company manager that arranges travel and housing for 90+ artists
- Touring: contract and coordinate Festival productions on multi-stop tours
- Exported productions: contract and coordinate Festival productions presented elsewhere
- International shows: visas, logistics, and production management for international groups
- Negotiate terms for performance venues, visiting productions, guest artists and staff
- Direct productions annually as appropriate
- Work with festival curator, producing director, and board of directors on a daily basis

The Shakespeare Theatre – Washington, DC (LORT B+)

Associate Director 2004-05

- Manage artistic department of \$12MM theatre, with 3 direct reports including a resident assistant director, literary manager, and artistic intern
- Work closely with artistic director, managing director and general manager on operational, producing, and strategic issues
- Act as local casting director, and manage the hiring of all actors/understudies, and coordinate casting with New York casting director
- Liaison for guest directors, including casting, orientation, production concerns, etc. (worked with Mary Zimmerman, Kate Whoriskey, Keith Baxter, Stephen Wadsworth, Doug Wager)
- Develop and manage an actor budget of approx. \$1.2MM
- Recruit, screen, teach and supervise an annual company of acting fellows
- Direct productions, readings, re-mounts as necessary
- Serve as artistic presence on committees, in meetings, and in educational programs
- Work with fundraising/development, PR/marketing, and education departments — public speaking, donor events, interviews, board meetings, workshops, etc.
- Adapted and Directed *As You Like It* in collaboration with the Kennedy Center

Resident Assistant Director 2003-04

- Assisted the directors of five mainstage productions in rehearsal, tech and previews
- Responsible for understudy rehearsals, put-in rehearsals, and replacements
- Maintain quality of production throughout the run of the show
- Work closely with associate director, artistic director, and stage management
- Participate in audience enrichment and other educational programs
- Direct play readings as part of the ReDiscovery series

Great River Shakespeare Festival – Winona, Minnesota (LORT D)**Associate Producer 2006**

- Support all producing efforts for a 2-show summer repertory season
- Produce a free outdoor concert series with 7 music groups and 13 concerts
- Oversee all guest services: box office, house management, access services
- Manage human resources: recruitment, hiring procedures, contracting, orientation, etc.
- Hire, train and supervise a company manager with responsibility for travel and housing of a 28-member acting company and 40+ staff and guest artists throughout the season
- Coordinate a volunteer program with over 300 volunteers, manage a steering committee, and implement the use of a new database
- Residency supervisor for interns and acting apprentices
- Collaborate on educational programs, fundraising, and other projects

Outward Spiral Theatre Company – Minneapolis, Minnesota (AEA Special Appearance)**Artistic Director 1998-2003**

- Responsible for all aspects of programming, production, and administration of a small semi-professional theatre specializing in gay, lesbian, bisexual and transgender issues
- Grew budget size from \$33K to \$125K in 5 years (3-4 play season)
- Directed 7 productions, produced 16
- Acted as managing director for 2 seasons, executing all financial, marketing, accounting and fundraising duties
- Helped secure, renovate, and operate a shared permanent theatre space
- Worked with a 9-member board of directors

Guthrie Theater – Minneapolis, Minnesota (LORT A)**Education Outreach Associate 1999-2001**

- Responsible for coordinating volunteer programs, including training tour guides
- Responsible for coordinating all outreach programs (tours, speakers, career programs, and customized workshops)
- Outreach programs served over 5,000 students and adults annually
- Spoke at hundreds of schools state-wide reaching thousands of students of all ages
- Coordinated in-house tours for annual open house event
- Worked closely with education coordinator, Sheila Livingston
- Interacted with all production departments

Volunteer Coordinator 1997-1999

- Responsible for coordinating volunteer programs, including recruitment, placement, training and retention
- Trained and supervised a team of volunteer tour guides and wrote a new tour guide manual
- Created an interactive volunteer database to manage 400 volunteers
- Coordinated tours for annual open house event
- Worked closely with education coordinator, Sheila Livingston
- Interacted with departments who used volunteers, including house management (ushers), development (events), company management (hospitality), and production (costumes)

directing | (representative list)

Macbeth	Shakespeare	Director	Park Square Theatre (MN)
The Gnädiges Fräulein	Tennessee Williams	Director	TW Theater Festival (MA)
Orpheus Descending	Tennessee Williams	Director	Southern Rep (New Orleans)
A Lovely Sunday for Creve Coeur	Tennessee Williams	Director	TW Theater Festival (MA)
Trials of Gertrude Moody (Premiere)	Kimberly Burke	Director	W.H.A.T. (MA)
The Glass Menagerie	Tennessee Williams	Director	Auckland Theatre Co (NZ)
Auto-da-Fé	Tennessee Williams	Director	TW New Orleans Lit. Fest
A Midsummer Night's Dream	Shakespeare	Director	Park Square Theatre (MN)
Diff'rent	Eugene O'Neill	Director	TW Theater Festival (MA)
The Enemy: Time (World Premiere)	Tennessee Williams	Director	TW Theater Festival (MA)
Green Eyes (World Premiere)	Tennessee Williams	Director	TW Theater Festival (MA)
A Streetcar Named Desire	Tennessee Williams	Director	Fortune Theatre (NZ)
Come and Go	Samuel Beckett	Director	TW Theater Festival (MA)
Dark Yellow	Julia Jordan	Director	W.H.A.T. (MA)
The Clean House (NZ Premiere)	Sarah Ruhl	Director	Fortune Theatre (NZ)
The Parade (World Premiere)	Tennessee Williams	Director	TW Theater Festival (MA)
The Broken Heart (Reading)	John Ford	Director	Red Bull Theater (NYC)
Thief River (World Premiere)	Lee Blessing	Asst. Dir. (Mark Lamos)	Signature Theatre (NYC)

the shakespeare theatre company (washington, d.c.)

A Midsummer Night's Dream	Shakespeare	Director (Re-Staging)	DC & Aspen
As You Like It	Shakespeare	Director	Kennedy Center
Nathan the Wise (Reading)	Lessing/E. Kemp	Director	ReDiscovery Series
Lorenzaccio (Reading)	de Musset/J. Strand	Director	ReDiscovery Series
Macbeth	Shakespeare	Assistant Director	Michael Kahn
Henry IV Part 1 & Part 2 (in rep)	Shakespeare	Assistant Director	Bill Alexander
Cyrano	Rostand/B. Kornhauser	Assistant Director	Michael Kahn
A Midsummer Night's Dream	Shakespeare	Assistant Director	Mark Lamos

guthrie theater (minneapolis)

As You Like It	Shakespeare	Director	Univ of MN BFA Prog.
The Stuff of Dreams (new work)	Bill Corbett, et. al.	Director	Guthrie on Tour
Antony and Cleopatra	Shakespeare	Assistant Director	Mark Lamos, Dir.
The Invention of Love	Tom Stoppard	Assistant Director	Joe Dowling, Dir.
Side Man	Warren Leight	Assistant Director	Ethan McSweeney, Dir.
Sweeney Todd	Sondheim	Assistant Director	John Miller-Stephany, Dir.

outward spiral theatre company (minneapolis)

Falsettos	William Finn/Lapine	Director	Loring Playhouse 8/03
In the Heart of America	Naomi Wallace	Director/Set Designer	Loring Playhouse 3/03
Hedwig and the Angry Inch	J.C. Mitchell/S.Trask	Director	Loring Playhouse 2/02
Dog Opera	Constance Congdon	Director	Loring Playhouse 8/01
The Most Fabulous Story Ever Told	Paul Rudnick	Director/Set Designer	Little Theater 1/00
The Big Hoover (World Premiere)	Antay Bilgutay	Director	Little Theater 11/00
Cloud 9	Caryl Churchill	Producer	Timothy Lee, Dir. 10/99

other theatre (twin cities)

First Night	Jack Neary	Director	Horizon Theatre 4/99
Steel Magnolias	Robert Harling	Director	Chaska Civic Theater 5/98
Sanctus (staged reading)	Mark Rosenwinkel	Director	Playwright's Center 7/02
May Cause Dizziness	Pinter, Durang, Pintauro...	Director/Producer	Bryant Lake Bowl 2/97

developmental/educational theatre (minneapolis)

Harriet Tubman (staged reading)	Buffy Sedlacek	Director	Stages Theatre 1/03
Seagulls in a Cherry Tree	William Missouri Downs	Director	Twin Cities Chekhov Fest 2/08
Food Porn (reading)	Andy Bragen	Director	Mixed Blood Theatre 2/07
Minustide (reading)	Kimberly Burke	Director	Playwright's Center 11/05
Harriet Tubman (reading)	Buffy Sedlacek	Director	Stages Theatre 1/03
Pullman Car Hiawatha	Thornton Wilder	Director	EP High Sch., MN 7/99
Antigone	Sophocles	Director/Designer	EP High Sch., MN 2/98
The Imaginary Invalid	Molière	Director/Designer	EP High Sch., MN 2/97

press | awards

THE GNÄDIGES FRÄULEIN: Huffington Post

"Jef Hall-Flavin's **excellent production** of this difficult but rewarding play achieved a balancing act all too rare when it comes to structurally hybrid works such as this."

Huffington Post – Bess Rowan, September 27, 2017

TENNESSEE WILLIAMS' TIME IS NOW: Boston Globe

Thanks in substantial part to the annual Provincetown Tennessee Williams Theater Festival, which kicks off this week, a spate of unseen or seldom-seen plays have pushed their way into view, **giving us a fuller sense of his entire body of work** and suggesting the need for a reappraisal of a writer we thought we knew.

Boston Globe – Don Aucoin, September 21, 2013

THE GLASS MENAGERIE: New Zealand Herald

"Acclaimed American director Jef Hall-Flavin brings an openness to poetic ambiguity and skilfully blends the catharsis of tragedy with the vitality of romance." "The journey to an unfamiliar venue is abundantly rewarded in ATC's **brilliant interpretation** of one of the masterworks of American literature."

New Zealand Herald – Paul Simei-Barton, May 19, 2013

THIS STUNNER... (THE CLEAN HOUSE): Sunday Star Times

This **stunner of a production** blows through the place like that cleanser they used to call the White Tornado. It's got everything: fantastic acting from the word go... brilliant set-design (Peter King), music and lighting effects (Ulli Briesse), including a living 3-D picture window used to stage fantasies; and direction (by American import, Jef Hall-Flavin) that shows an artful sense of body-humour and **a privileged understanding of the way words work.**"

Sunday Star Times (New Zealand), April 8, 2007

'AS YOU LIKE IT' TAKING KIDS INTO THE MAGIC: Washington Post

"Hall-Flavin, who serves as editor as well as director, offers **a slimmed-down but not dumbed-down encapsulation**. The plot and, more significantly, the language are intact from the original... Hall-Flavin does invent a sweet prologue, in which an actor in street clothes recites the play's most famous speech, about the seven ages of man, and invites the other actors to join him, because of course, as Shakespeare helpfully notes, 'all the world's a stage.'"

Washington Post, March 7, 2005

2002 IN REVIEW: ONSTAGE: StarTribune

"Hedwig and the Angry Inch, *Outward Spiral*: This marvelous piece, directed by Jef Hall-Flavin, wrapped a serious message of identity and exclusion inside jagged humor and Beatles-like rock 'n' roll. Great tech, a kickin' band and edgy, provocative, entertaining ideas made this the **best small-theater production of the year.**"

Minneapolis StarTribune, December 22, 2002

AWARDS

Certificate of Merit for **Invaluable contribution to the development of culture and theatrical art internationally** from the Chairman of Culture for the Samara Regional Assembly, Russia, 2016.

Top 10 productions of 2013: **The Glass Menagerie** (Lumière, New Zealand)

Top 10 productions of 2002: **Hedwig and the Angry Inch** (St. Paul Pioneer Press, Lavender Magazine)

Best Small-Theater Production of the Year: **Hedwig and the Angry Inch** (Minneapolis StarTribune)

Top 10 productions of 2001: **Dog Opera** and 1999: **First Night** (Lavender Magazine, Minneapolis)

education | affiliations

degrees

Royal Central School of Speech & Drama	MFA, Performance Practice as Research	2020 (Distinction)
Hofstra University, NY	BFA, Theatre	1991 (Dean's List)
Eden Prairie High School, MN	Diploma	1987

affiliations

Unions:	Stage Directors and Choreographers Society (SDC), Actor's Equity Association, AFTRA/SAG
Associations:	International Federation for Theatre Research (IFTR), Performance Studies International (PSi), Theatre and Performance Research Association (TaPRA), Performance Philosophy Network

representative productions - USA

**ORPHEUS DESCENDING**

Southern Rep Theatre
New Orleans, Louisiana, 2016

"Director Jef Hall-Flavin, who also serves as executive director of the Provincetown Tennessee Williams Theater Festival, makes excellent use of the space... The hive of activity sets the tone of the play by establishing a community bubbling over with gossip, rumor-mongering and repeated tales of violence."

- The New Orleans Advocate

"With a guitar and a smirk, Val Xavier brings a sexy, hip-swaying energy to a rigidly conservative small Southern town. ...a powerful and thought-provoking experience."

- Best of New Orleans

**AS YOU LIKE IT**

The Kennedy Center
in association with the Shakespeare Theatre Company
Washington, DC, 2005

"Hall-Flavin, who serves as editor as well as director, offers a slimmed-down but not dumbed-down encapsulation. The plot and, more significantly, the language are intact from the original..."

Hall-Flavin does invent a sweet prologue, in which an actor in street clothes recites the play's most famous speech, about the seven ages of man, and invites the other actors to join him, because of course, as Shakespeare helpfully notes, 'all the world's a stage.'"

- Washington Post

**THE STUFF OF DREAMS**

Guthrie Theater
Regional Tour, 2001

In 2000, the Guthrie began touring its productions to communities all across the region. Commissioned by the Guthrie, *The Stuff of Dreams* was written by Bill Corbett, weaving excerpts from Sophocles, Shakespeare, Rostand, Ibsen and Arthur Miller in a "no exit" style play that introduced audiences to characters from history's great plays in a clever and moving way.

**HEDWIG AND THE ANGRY INCH**

Outward Spiral Theatre Co.
Minneapolis, MN, 2002

Only the 3rd professional production after its New York run, the Minneapolis version of Hedwig was extended for two months beyond its original run due to popular demand. It's a show I'm particularly proud of.

"Hedwig succeeds on many levels, each of which dazzles in director Jef Hall-Flavin's staging. As just one example, in the song 'Exquisite Corpse,' Hall-Flavin orchestrates a jagged strobe-driven chaos remarkably like that radical, scary uncertainty one felt at the best punk shows of the early 1980s."

- Minneapolis StarTribune

representative productions - international

**THE GLASS MENAGERIE**

Auckland Theatre Company
Auckland, New Zealand, 2013

"Acclaimed American director Jef Hall-Flavin brings an openness to poetic ambiguity and skillfully blends the catharsis of tragedy with the vitality of romance."

- New Zealand Herald

"I was completely startled by the Auckland Theatre Company's exquisite production. Jef Hall-Flavin, a visiting American director brought alive a funny, charming, delicate and sweet play."

- NBR/National Business Review (New Zealand)

"Ultimately, I have to give huge credit to ATC and especially director Jef Hall-Flavin for giving us not only a great production of The Glass Menagerie, but a brave one."

- The Lumière (New Zealand)

**THE CLEAN HOUSE**

Fortune Theatre
Dunedin, New Zealand, 2007

"This stunner of a production blows through the place... It's got everything: fantastic acting from the word go... brilliant set-design (Peter King), music and lighting effects (Ulli Briesse... and direction (by American import, Jef Hall-Flavin) that shows an artful sense of body-humour and a privileged understanding of the way words work."

- Sunday Star Times (New Zealand)

"This blending of fantasy and solid reality in every aspect of the production is skillfully handled by Hall-Flavin and faithfully interpreted by the cast and production team, providing a series of magical little surprises which make for exhilarating theatre."

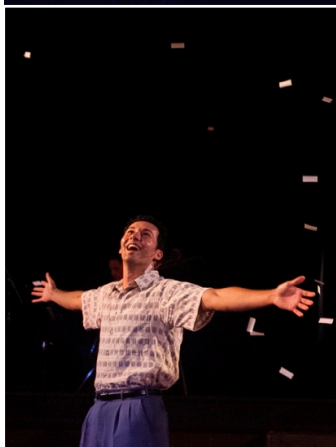
- Theatreview (New Zealand)

**ORPHEUS**

The Dust Palace
Auckland, New Zealand

With the blessing of the Tennessee Williams estate, I am working with a circus-theater troupe in New Zealand to adapt ORPHEUS DESCENDING into a cirque piece. in a 10-day workshop in December of 2014.

This transdisciplinary project uses circus as a means of storytelling, blending dramatic text with music and acting.

**AUTUMN SONG**

Minneapolis, MN | Provincetown, MA | Columbus, MS | Berlin, Germany

The poems of Rainer Maria Rilke and Tennessee Williams set to music.
Music by George Maurer, Compiled and Directed by Jef Hall-Flavin

This lush song-cycle, years in the making by jazz composer George Maurer, made a dramatic debut in 2012. It imagines a meeting between two poets, using only their poems for lyrics. The piece has been seen in Minnesota, Massachusetts, Mississippi and Berlin, with more performances planned in the future.

"Imagine George Gershwin coming to town with some Broadway musicians, along with Hugh Jackman and Michael Crawford. It was that good."

Columbus Dispatch

jefhallflavin.com

teaching | lecturing

Post-Graduate Teaching

- Mountview Academy, London UK: MA Tutor, Performance Project
- The Actors Program, Auckland, New Zealand: Unit Tutor, Acting & Acting Theory
- Mayo Medical School, Rochester, MN: Workshop Intensive “The Anatomy of a Story”
- Boston Center for Adult Education: “Williams 101”

Undergraduate Teaching

- University of Minnesota/Guthrie BFA Actor Training Program – Visiting Professor & Director
- University of Otago, Dunedin, NZ: Adapting Shakespeare
- George Mason University, Fairfax, VA: Audition Workshop
- Hofstra University, Hempstead, NY: Theater Careers Workshop
- Concordia University, St. Paul, MN: Musical Theater
- Hamline University, St. Paul, MN: Audition Workshop
- Stephen’s College, (Columbia, MO), Lake Okoboji Summer Theater, IA: Guest Director

Guthrie Theater (minneapolis, mn) – Teaching Artist 1998-2010

- “Schools on Stage” program
- Beginning & Intermediate Acting
- The Actor’s Toolbox (advanced seminar/scene study)
- The Director’s Toolbox
- Master Class: The Professional Audition

Workshops, Camps & Intensives

- Boston Center for Adult Education, MA
- Stages Theatre Company, Hopkins, MN
- Eden Prairie High School Drama Camp, MN
- Concordia University, St. Paul, MN
- Phipps Center for the Arts, Hudson, WI
- Spotlight Musical Theatre Award Program judge – Theatre Live!
- Hennepin Theatre Trust Guest Artist (Acting for the Musical Theatre)

research | writing

Recent Publications

- *Incongruity and the Tragicomic Gestus in the plays of Tennessee Williams*. **ArteActa**, A Journal for the Performing Arts and Artistic Research, 2020 (currently under peer review)

Conference Papers (selection)

- *An Ecology of Safety: The 66 Year Parade of Tennessee Williams*. **IFTR**, Galway IR, July 2020
- *Freeing Text from the Tyranny of Meaning: Analysis Revised as Event*. **TaPRA** PG Symposium, Warwick UK, March 2020
- *Incongruity and the Tragicomic Gestus in the plays of Tennessee Williams*. DAMU/The “S” Word, Prague CZ, November 2019. Publication in the Czech performance journal **ArteActa** in 2020.
- *Large Scale Impact with Economy of Means*. **USITT** (United States Institute for Theatre Technology)
- *A Survey of Acting Theory*: **AATE** (American Alliance for Theatre & Education)

Other Writing

- **Co-Editor**: *Provincetown Tennessee Williams Festival Magazine* (2007-2018)
- **Curriculum Developer**: *Make a Scene!* A comprehensive guide for primary school teachers to incorporate theater into the classroom under Minnesota’s graduation standards, developed by Stages Theatre Company with a grant from the MN Dept. of Children, Families and Learning.
- **Manuscript Editor**: *Five Approaches to Acting* David Kaplan (West Broadway Press, 2001) — original transcriptions of acting classes, and initial editing on manuscript versions of the text.